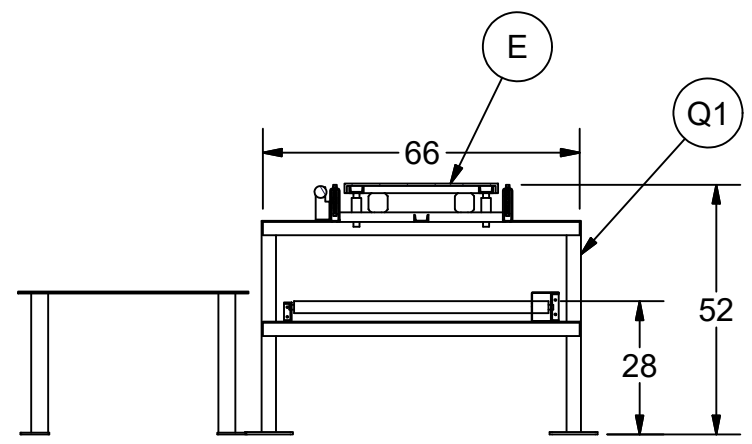
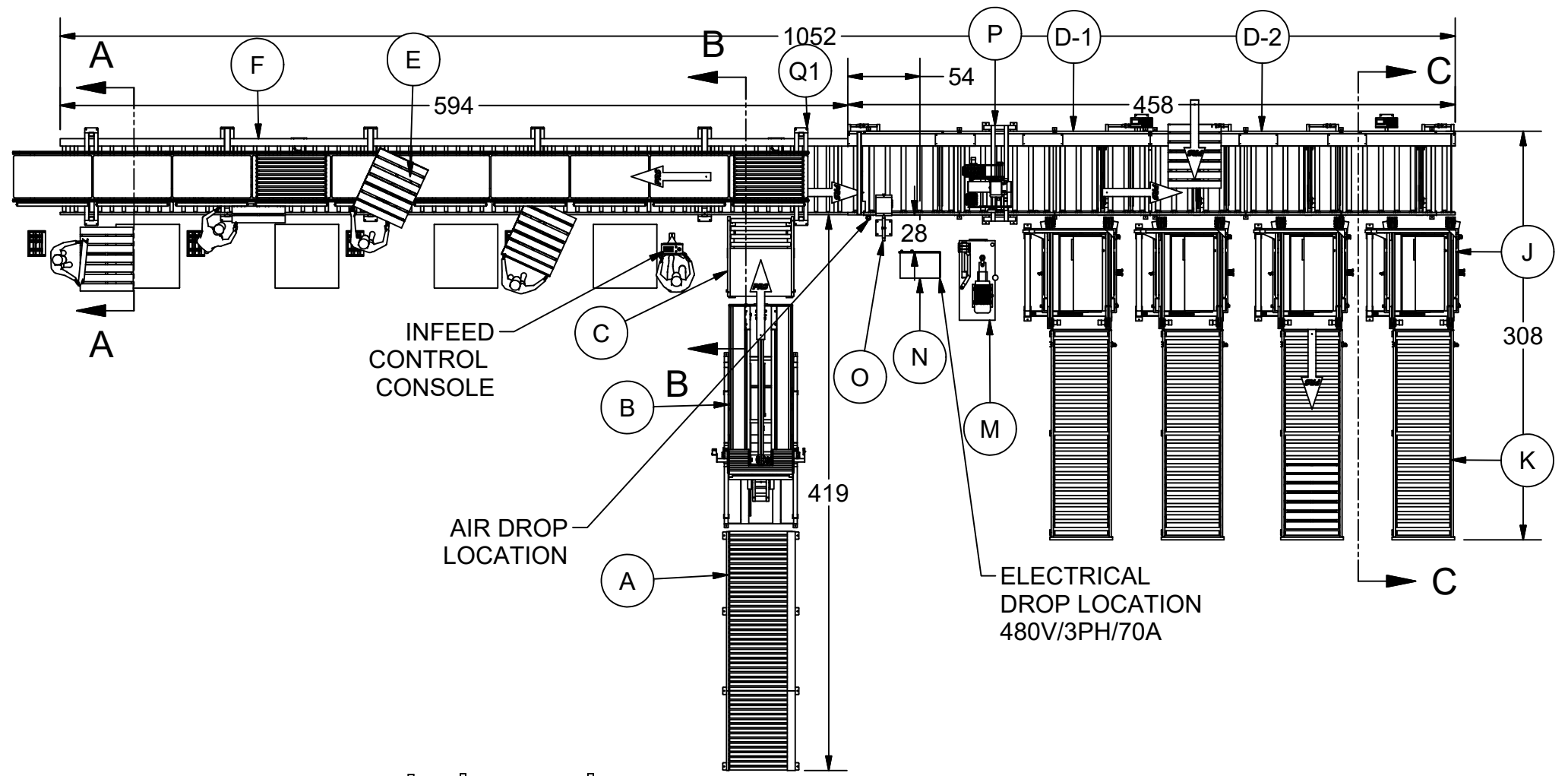
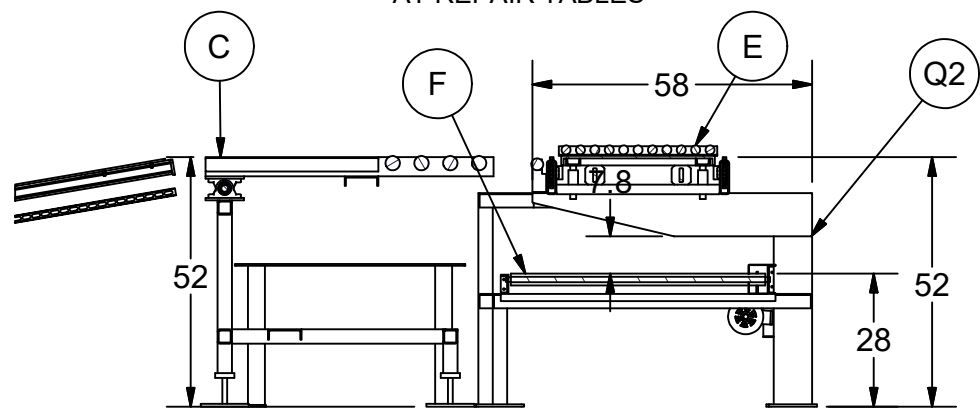


**EQUIPMENT LIST**

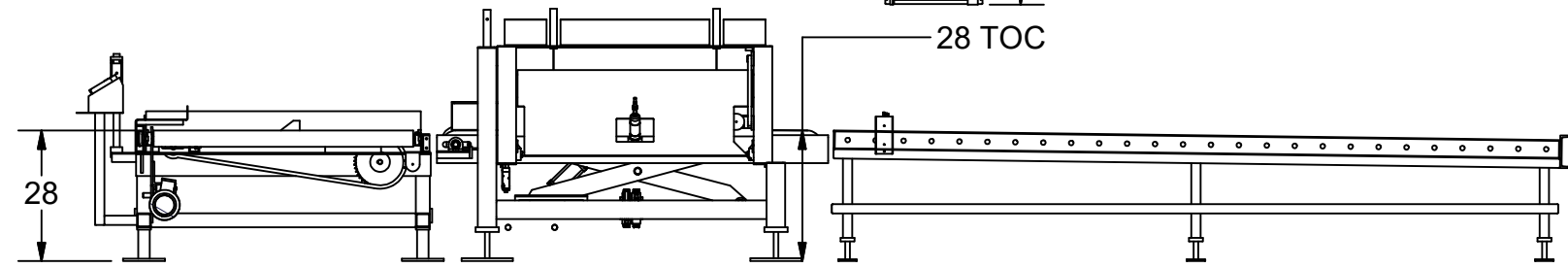
ITEM	DESCRIPTION	QTY
A	STACK INFEED CONVEYOR - PRS PRE-OWNED	1
B	STACK TIPPER - PRS PRE-OWNED	1
C	DROP DOWN CONV. (TALL W/ SLIDE PLATE)	1
D-1	19'L x 50" EFF CHAIN DRIVEN LIVE ROLLER CONVEYOR ASSEMBLY	1
D-2	19'L x 50" EFF CHAIN DRIVEN LIVE ROLLER CONVEYOR ASSEMBLY	1
E	50' LONG 2-STRAND CHAIN CONVEYOR W/ 10 LIFTING PLATFORMS	1
F	50'L CONVEYOR ASSEMBLY (25' X 2)	1
J	G-STACKER - LEFT FIXED	4
K	STACK DISCHARGE CONVEYOR - PRS PRE-OWNED	4
M	CENTRAL HYDRAULIC SYSTEM	1
N	CONTROL CABINET	1
O	SCANNER STAND	1
Q1	CONVEYOR STAND - TWO-TIERED	2
Q2	TWO-TIERED CANT. CONV. STAND	4
P	LABEL REMOVER ASSEMBLY	1



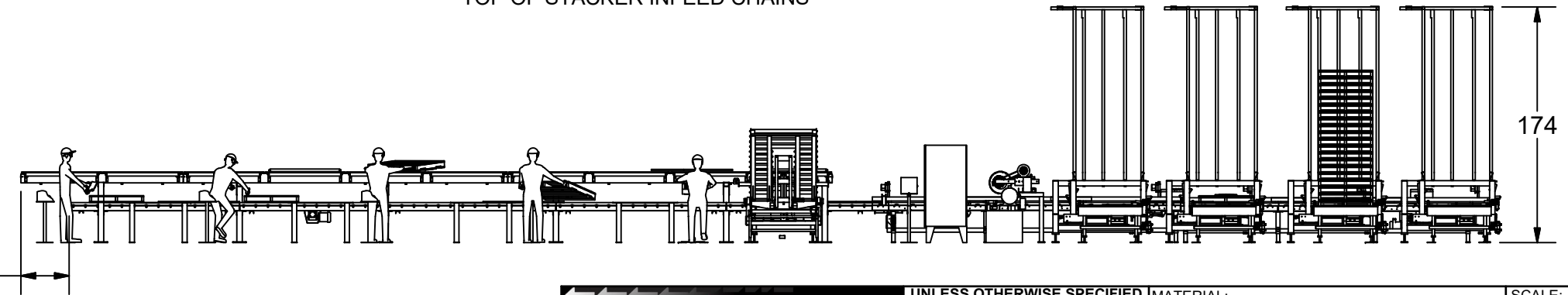
**SECTION A-A**  
TOP OF ROLLERS & TOP OF CHAIN  
AT REPAIR TABLES



**SECTION B-B**  
TOP OF ROLLERS, TOP OF CHAIN  
AT INFEED FROM DROP DOWN



**SECTION C-C**  
TOP OF STACKER INFEED CHAINS



NOTE:  
1. ALL DIMENSIONS IN INCHES

	UNLESS OTHERWISE SPECIFIED	MATERIAL:	SCALE: NTS
	DIM TOLERANCE: INCHES		
	ONE PLACE: +/- .10	DRAWN BY: TDL	DATE: 8-19-21
	TWO PLACES: +/- .050	DESCP:	<b>SORT &amp; REPAIR LINE</b>
	ANGLES: +/- 1		
	( ) INDICATES REF DIM		
PROPERTY OF PALLET REPAIR SYSTEMS INC. JACKSONVILLE IL AND IS LOANED TO THE RECIPIENT SUBJECT TO RETURN UPON DEMAND. IT'S CONTENTS ARE CONFIDENTIAL AND MUST NOT BE COPIED OR SUBMITTED TO OUTSIDE PARTIES FOR USE OR EXAMINATION.	QTY: 1	SHEET NO: 1 OF 1	REV: 2
	MODEL:	PART NO:	
	NEXT ASSY:		